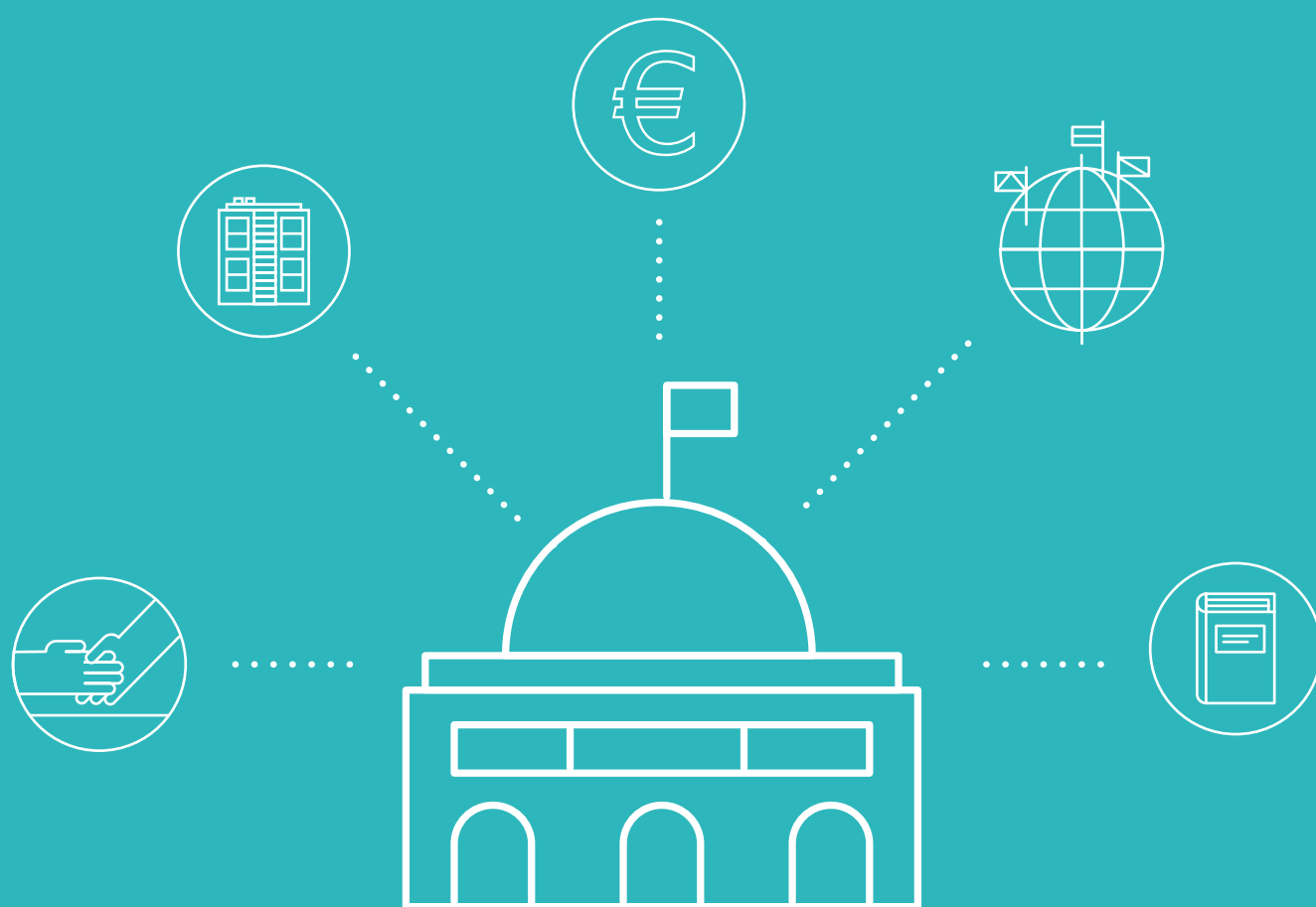


FACULTY OF ECONOMICS AND MANAGEMENT

FULL TIME DEGREES
APPRENTICESHIP
CONTINUING EDUCATION



FROM BACHELOR TO MASTERS AND PhD's

The Faculty of Economics and Management offers students numerous degree choices and international programs. 26 Masters backed by two research teams provide many paths to fulfill your career plans.

The school also provides specialized programs for Medical school and Grande Ecoles students.

The programs from the Faculty of Economics and Management offer the largest number of apprenticeship positions in France. You work, and get paid, while you study. They are apprenticeship opportunities with our local and global business partners.

DOCTORATE SCHOOL



The Doctorate School OMI (Organizations, Markets and Institutions) structures research topics related to economics and management, law, political science, sociology and philosophy.

It develops the synergy between these different themes around two axes:

- The functioning of markets;
- The dynamics of actors and organizations.

Doctoral training allows a transversal view of research subjects.

INTERNATIONAL RELATIONS



A Window to the World!

The Faculty of Economics and Management, anchored in an open and culturally diverse territory, has a long history accepting international students, international projects (Erasmus +, double degrees, Erasmus Mundus...), international certifications (TOEIC) and numerous language courses.

Its research centers, its partnerships with international institutions (OECD, World Bank, European Commission), and also global corporations and international universities (Harvard Business Publishing for IAE) contribute to a comprehensive and global education.

The Faculty of Economics and Management currently offers 7 international programs full time (compulsory semester abroad in Bachelors and Internship in Master) as well as in apprenticeship (logistics, purchasing, human resources and finance).

STUDENT MOBILITY AND LANGUAGE PROGRAMS

MORE THAN 90 GLOBAL PARTNERSHIPS

EXCHANGE PROGRAMS AND DOUBLE DEGREES

PROGRAM FOR INTERNATIONAL RESEARCHERS AND PROFESSORS

ECONOMICS

The Economics Department has programs which deliver introductory courses in Economics, Management, Mathematics and Statistics in the first two years. In the third year of the License 3 (L3), there are 4 options available. With the L3, you will be prepared to follow one of 3 Masters Programs, which have a further 7 options in international economics, health and banking.

These specializations are either research or professionally oriented. The professional programs include mandatory work placement. Three of the masters programs offer an apprenticeship option.

ERUDITE

Erudite is the research Team on the Use of Individual Data related to Economic Theory.

It aims to develop and promote research in economics within the University of East Paris (UPEC and UPEMLV).

The team is open to any researcher and scholar of the PRES Paris-Est engaged in research in one of the three following areas:

- Territory, Employment and Health;
- Corporate Strategies and social and economic performance;
- International Economics and Development.

www.erudite.univ-paris-est.fr

Bachelor

1st & 2nd Year

- Economics and Management
- Excellence Path/Selective Path in Economics and Management*

3rd Year

- Economics and Information Processing
- Banking - Finance
- Economic and Financial Expertise
- International Economics



Master 1

4th Year

- Applied Economics
 - Econometrics
 - Health economics
 - Education and Training in Economic and social sciences (EFSES)
 - Master 2nd degree course CAPET MEEF Eco-Management (MEEF)
- International Economics
 - International economics studies (IES)
- Currency, Banking, Finance and Insurance



Master 2

5th Year

- Development Economics & International Projects Management
- Health Economics*
- Education and Training in Economics and Social Sciences (EFSES)*
- Property and Real Estate Engineering*
- Banking*
- Methods Applied Statistics and Econometrics for Research, analysis and Information Processing (Maserati)*



Eiffel School of Management (IAE Gustave Eiffel)

The Eiffel School of Management offers a diverse range of courses in management, finance and accounting from Bachelor to PhD. Programs are designed and led by experienced teaching teams combining scholars and experienced practitioners (Consultants, CEOs, Managers, Lawyers...)

The degrees are offered as a mix of classroom courses with internships, apprenticeships or continuing education, 1 500 students receive an education, each year, which permits them to contribute to business development in dynamic organizations throughout the world.

IRG Institute of Research in Management (EA 2354)

IRG is the host organization of researchers in management sciences from the University of East Paris (UPEC, MLV), bringing together 75 scholars and 50 doctoral students.

This is a multidisciplinary research center in visible management and recognized on the themes of Management and Companies.

It focuses its work on the following three areas:

- Performance and Responsibilities;
- Services Companies and Services to Society;
- Organizational and Societal Innovations, Transformations and Resistance.

www.irg.univ-paris-est.fr

Licence

1st & 2nd Year

- International Management

3rd Year

- International Management
- Accounting, control, audit
- Business Management



Master 1

4th Year

- International Master in Business Management (IMBMs)
- Accounting, Control, Audit
- Marketing and Sales
- Management and Consulting*
- Finance
- Management and Health*



Master 2

5th Year

- MBA (Master in Business Administration)
- Consulting, Studies and Research
- Accounting, Control, Audit
- Management Control and Decision Support*
- Development and University Management*
- Wealth Management*
- Portfolio management*
- Human Resource Management in Multinationals*
- Financial Engineering*
- Business Engineering*
- Innovation & Business Creation*
- Logistics and international purchasing*
- Management of Corporate Social Responsibility*
- Management of health institutions*
- Management of nursing organizations*
- Management of commercial networks*
- Sport Management*
- Marketing-Product Manager*

* Apprenticeship



KEY FIGURES

3 000 Students

550 Apprentices

400 Professors

2 700 m² Library

26 Masters

80 Partner Universities

250 Business Partners

BUSINESS PARTNERS

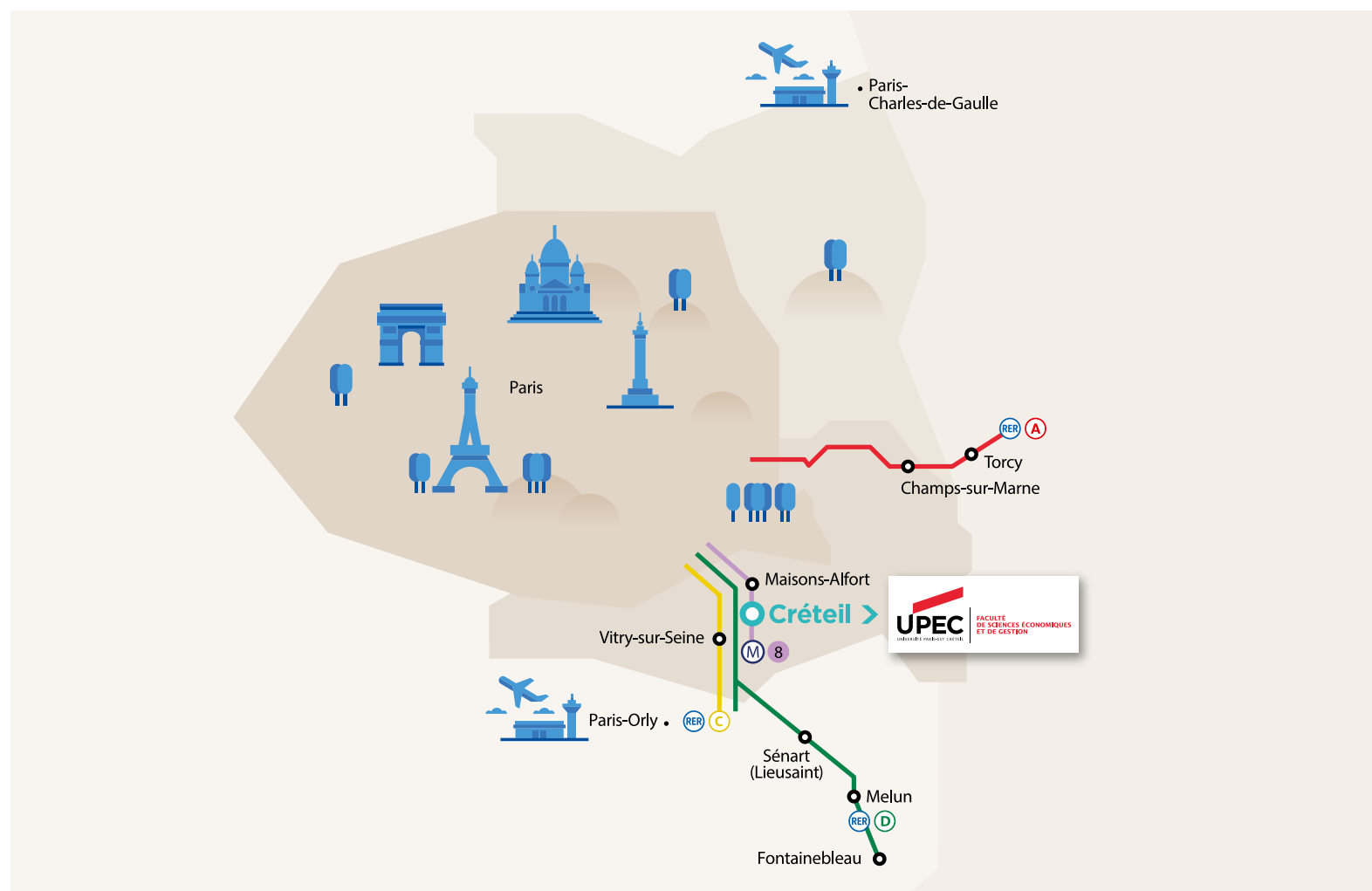


Invest in your future teams!

More than **250 global and local companies** support us in the evolution of our programs to better meet the expectations of the labor market. They contribute to improvements in the infrastructure, educational materials and human capital of the faculty.

Come and join!

<http://fseg.u-pec.fr/taxe-d-apprentissage>



Contacts

Department of Economics

<http://economie.u-pec.fr>
scolarite.eco@u-pec.fr
01 41 78 46 77

IAE Gustave Eiffel - Eiffel School of Management

www.iae-eiffel.fr
iae@u-pec.fr
01 41 78 47 35



Faculty of Economics and management

www.fseg.u-pec.fr
fseg@u-pec.fr

61, avenue du Général de Gaulle
94010 CRÉTEIL cedex